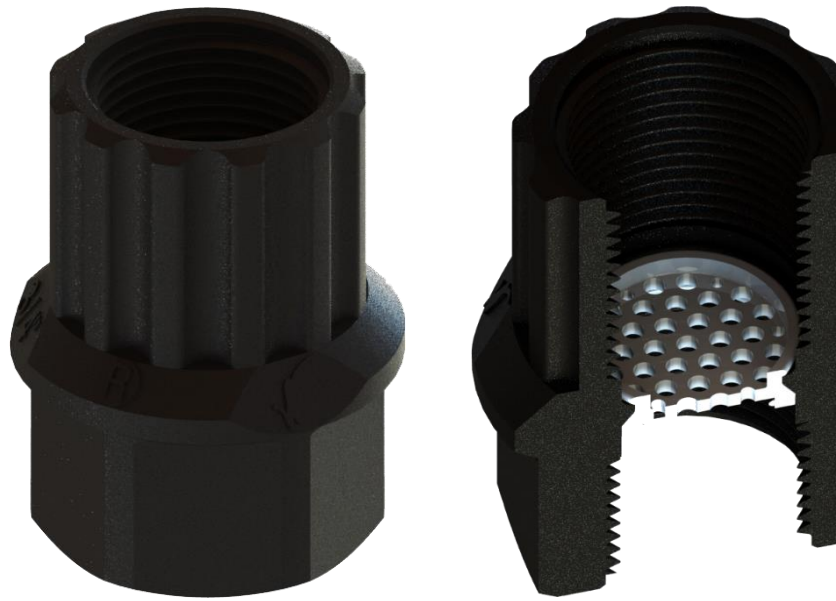


3/4" Coupling

- ✓ WITH or WITHOUT FILTER option
- ✓ UV Resistance
- ✓ Better grip and applying the coupling on the cane.



SPECIFICATIONS

- Material: Polyamide PA66 + 30% fibre-glass.
- Connectionn: 3/4" (female).
- Hexagonal part:
35 mm. cane (torque wrenches).
- Marked part:
Ø35 mm. sprinkler (bending wranches).

DIMENSIONS AND WEIGHTS

DENOMINATION	HEIGHT		WIDTH Ø		WEIGHT		CONNECTION
	mm	Inch	mm	Inch	Kg	Pounds	
¾" COUPLING WITHOUT FILTER	55	2.17	43	1,69	0,038	0,08	GAS ¾" H-H
¾" COUPLING WITH FILTER	55	2.17	43	1,69	0,040	0,09	